



Brunswick



ISSUE 29 - Spring 2021

NEIGHBOURHOOD
NEWS



Brunswick Village is here!

Brunswick Village, the all-new Extra care development is now complete and residents will start to move in from next month.

The one and two-bedroom apartments for the over 55's, feature a fully fitted kitchen, flooring throughout, audio/video intercom entry system, easy access bathrooms, with fabulous views and most have a balcony.

The ground floor has on-site facilities such as a bistro, Day Care centre, hair salon, electric scooter storage area, laundry room and community areas.
(Subject to Government guidelines on COVID19 restrictions).

There is also a roof-top garden area with stunning views over the Manchester skyline, for residents to enjoy and maybe grow a plant or two to put their own stamp on it.

Brunswick Village is located at 50 Brunswick Street, M13 9PE.

And great news...there are still apartments available, so why not apply now to reserve your place.

For more information or an application form, visit the S4B website. You can also give us a call **0300 555 0128** or email **info@s4bmanchester.co.uk**.



REGISTER TO VOTE

to get on the electoral register, or to change your details.

You need to be on the electoral register to vote in elections or referendums.

The deadline for registering to vote in the 6 May elections is 11.59pm on 19 April 2021.

To register (in England) you must be one of the following:

- 16 or over
- a British citizen
- an Irish or EU citizen living in the UK
- a Commonwealth citizen who has permission to enter or stay in the UK, or who does not need permission

You only need to register once - not for every election. You'll need to register again if you've changed your name, address or nationality.

Register online
www.gov.uk/register-to-vote.

It usually takes about 5 minutes.



RENT INCREASE - 2021

From April 2021, rent prices will increase by 1.5%.

The rent increase is vital for us to continue to manage and maintain homes in Brunswick and support the neighbourhood.

The new charge offers the best value for money possible and accurately reflects the services which customers benefit from.

We have made it clear what services customers are being charged for and how much they cost.

If you pay by direct debit you will receive a letter advising of the increase in direct debit payments.

For more information, please get in touch.

Covid-19 vaccinations started locally in January at the Vallance Health Centre on Brunswick Street. Your GP will contact you when it's your turn.

Sadie Renner, aged 66, a tenant from Elizabeth Yarwood Court is pictured here receiving her Vaccine.

She said: "I was a bit hesitant, but it didn't hurt and I've had no symptoms".

The Buzz Manchester website has lots of useful information and can answer any questions or concerns you may have.

Visit buzzmanchester.co.uk/learnaboutthehealth/covid19

Or contact **local health worker Carlos Tait** on **07305 828 029**.



IS HERE FOR YOU

The Budget announced on Wednesday 3 March, set out the Government plan for the first steps in economic recovery.

Lots of the temporary measures put in place during the pandemic are now extended until at least the summer, including the furlough scheme and universal credit uplift.

It is clear that tough times are ahead for many of our customers and we will be there to help them through it all.

S4B will work with any customer struggling to pay rent to make this manageable in the long term.

We offer one-to-one advice and support on topics including access to benefits and managing household budgets.

If you are struggling to make your rent payments, it's vital you let us know as soon as you can so we can work with you to set up an arrangement.

The worst thing you can do is to stop making payments and not speak to us.

If you would like to speak to someone about your money or your rent payments, our Income & Financial Inclusion team is here to help. Please contact us.

If you have any questions please do get in touch with us on **0300 555 0128**, Email info@s4bmanchester.co.uk or visit the website www.s4bmanchester.co.uk.



HANDS



FACE



SPACE



FRESH AIR



**KEEP YOUR
DISTANCE**



VENTILATE



KEEP A LOG



**KEEP WASHING
YOUR HANDS**



STAY ALERT



STAY SAFE

CELEBRATING THE HISTORY OF GARTSIDE GARDENS

It's 200-years since Rusholme Road Cemetery was established in 1821 on a four-and-a-half-acre plot of land then called Cock Meadow.

By 1880 it was no longer a viable business however, it struggled on until 1921 before finally closing.



Gartside Gardens Today

The site then became Gartside Gardens public park in 1954, named after John Henry Gartside who, on his death, bequeathed £33,000 towards Manchester's public parks.

As part of the Brunswick PFI regeneration project, an archaeological investigation was carried out by Oxford Archaeology in 2014 to determine if any buried remains would be disturbed by development works.

It was found any remains would not be disturbed but also that most of the graveyard had been removed, estimated to be in the 1950s.

Contact Friends of Gartside Gardens to get involved in the park activities.
Email: foggs@outlook.com.

Today we have the wonderful park, a beautiful space for all to enjoy. Play areas, green space, sports pitches and of course the peace tree standing proudly next to the bee carving - a space to sit and reflect.

It's unlikely the fun-day will take place again this year due to the pandemic, but fingers crossed we can look forward to it again next year. Even without the event we can hope for a lovely summer so we can all get out and enjoy the park in the fresh air.

So why not get down there, you could even take a picnic to make a day of it!

Please...
Don't be a litter bug!
Don't forget, it's a public space for us all to enjoy.
Please respect the park and each other.
Use the bins provided or take your litter home with you.
Thank you.

Chorlton-on-Medlock Allotment Society (COMAS) have donated raised beds to be placed at the end of the new Boulevard and by Elizabeth Yarwood Court on Kincardine Road, to help keep the lanes pedestrianised with safety in mind for the public. They will also look lovely!



ELECTRICITY

At the allotment, the electricity project is well underway, and COMAS hope to have a switch on date soon, so watch this space.

The project will bring mains electricity to the allotment portacabin meaning additional benefits for plot holders such as lighting and for making a nice cup of tea after all that hard work!

COMAS also plan to hold community events so the lighting will be invaluable.

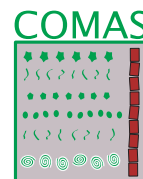


Orchard Community Food Beds have been provided by COMAS to encourage food to be grown and eaten locally.

The planting beds were made using recycled boards from building sites around the area.

The soil was provided using a grant from the Co-operative Bank DirectPlus Fund, and the fruit (raspberries, strawberries and rhubarb) recovered from the gardens behind Elizabeth Yarwood Court.

It is hoped that a harvest might be possible this year.



For more information, dates of the event or if you are interested in joining COMAS, visit www.comallsoc.co.uk, send an email to info@comallsoc.co.uk or telephone 07587 672 937.



APPLY NOW!

About Brunswick Village

Brunswick Village has a dedicated team based on-site, designed to cater for a variety of needs for older people.

And although there will be a support team available, not everyone living at the scheme needs to have any specific health needs.

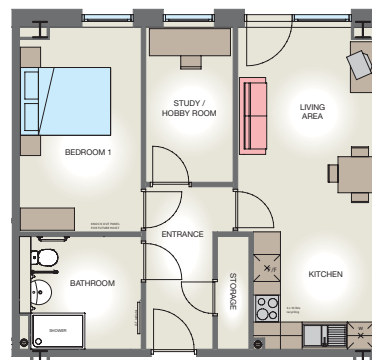
You may need very little or no support but safe in the knowledge the care team will be on hand to help you if your personal needs ever change without having to move home.

You will have everything you need all under one roof, never having to leave for anything if you do not wish to.

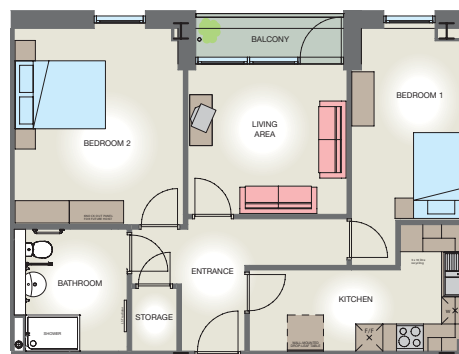
There are 60, one and two-bedroom self-contained apartments at Brunswick Village which have:

- Fully fitted high specification kitchens
- Lounge with balcony (in most apartments)
- Choice of views of the city centre, gardens and allotments, the Brunswick neighbourhood and more
- Audio/video intercom access
- Pull cord alarms
- Easy access bathrooms
- Flooring fitted throughout

Plan of a typical one bed apartment



Plan of a typical two bed apartment



For actual dimensions or more information visit our website.



"I am going to have a new lease of life and beautiful new friends"





BRUNSWICK CHURCH REFURBISHMENT UPDATE



Refurbishment Project

Brunswick Church is pleased to announce that, with the help of grants funders including Sport England, they will be able to start building work on phase one of their refurbishment project in the next few months.

The aim of the project is to improve the building, particularly the hall, for its role in serving the local community through Positive Steps, Brunswick Beestro, M13 Youth Project and more.

They are now less than 10% away from the total needed to complete the project. If you would like to donate, no matter how small, to help them reach their goal please get in touch with the church.

Visit www.brunswickchurch.org.uk or email info@brunswickchurch.org.uk.

Church Community Garden Consultation

As part of refurb the Church wants to create a garden in the area between the worship room and the Rectory, where the two lovely trees are, and opposite Brunswick Village, the all-new Extra Care development.

A consultation is taking place to find out what people would like to see in this garden and how they would like to see it used.

Visit the website and fill in the online voting form - www.brunswickchurch.org.uk/refurb-garden.

Moisture Produced in your Home.

Everyday activities add extra moisture to the air inside our homes. Even our breathing adds some moisture (remember breathing on cold windows and mirrors to fog them up?).

To give you some idea as to how much extra water this could be in a day, here are a few examples, imagine the pints as milk bottles.

2 people at home for 16 hours

= 3 pints

A bath or shower

= 2 pints

Drying clothes indoors

= 9 pints

Cooking and use of a kettle

= 6 pints

Washing dishes

= 2 pints

Bottled gas heater (8 hours use)

= 4 pints

**Total Moisture added in one day
= 26 pints or 14.8 litres.**

The simplest way to help reduce condensation in your home is good ventilation, so open a window whenever possible to keep the air circulating especially while cooking for example.

IMPORTANT!



Resident property alterations

If you want to make any alterations to your property, you can only do so with prior permission of S4B.

Please get in touch if you would like to make any alterations to your home, such as:

- Laminate flooring
- Wi-fi controlled heating such as Nest or Hive
- External decorations or structures in garden

Email your request to:
info@s4bmanchester.co.uk.

Any consent will be provided in writing to residents.

Know your Councillors



Tina Hewitson - Tel: 0161 237 1805.
cllr.t.hewitson@manchester.gov.uk



Bernard Priest - Tel: 0161 740 8407.
cllr.b.priest@manchester.gov.uk



Amna Abdullatif - Tel: 07971 384 539.
cllr.amna.abdullatif@manchester.gov.uk

LOVE WHERE YOU LIVE

Bin collection day in Brunswick is every Friday.

Help keep Brunswick tidy

Take your wheelie bin out for collection when it's due, and bring it in again afterwards to avoid being a hazard and to prevent it from being taken.

It costs £25 to replace your bin if it is taken so please store it safely.

Say NO to fly-tipping

Don't overfill your wheelie bins or leave loose rubbish around them.

If you have a communal bin chute:

Make sure everything goes down the bin chute and don't leave any items on the floor.

S4B caretakers work to keep all the communal spaces clean and tidy so please show you care by placing all items in the bin chute or recycling.

Don't place hot items in the bin chute, e.g. smoking materials, hot embers or hot oil - Wait until it has cooled.

#loveyourcaretaker
#proudoofbrunswick

Recycle, recycle, recycle!

Details of what can and cannot be recycled can be found on the website or please get in touch for a copy of our leaflet.

Keep your garden tidy

A reminder that if you have a garden, it is your responsibility to keep it clean, tidy and well maintained, with grass cut as required.

To help you, S4B offer a FREE garden tool hire service. (add) If you cannot manage your own garden, S4B offer a concessionary gardening service for elderly or disabled customers with no family support.

T: **0300 555 0128** or call into the **S4B housing office** to find out more.

To apply please contact S4B Housing office to complete the application form for 2021.



International Women's Day

Famous woman of Brunswick

ELLEN CICELY WILKINSON

8 October 1891 - 6 February 1947

There are blue plaques at the site of Ellen's birthplace in Balsam Close, Brunswick M13 9UL and at the Quadrangle in Manchester University (M13 9PL) where a building is also named in her honour.

Ellen, a Stateswoman and Cabinet Minister, was born at 41 Coral Street the site now known as Balsam Close and was a pupil at Ardwick Higher Elementary Grade School on Hyde Road (M12 6BA), before attending Manchester University.

She graduated in 1913 and became involved in the suffrage movement.

By 1915 Ellen was the first national women's organizer for the Amalgamated Union of Co-operative Employees (later USDAW).

After briefly serving on Manchester City Council, Ellen was Labour MP first for Middlesbrough East and subsequently for Jarrow.

She led the famous march in 1936 to London and became a prolific writer and journalist. During the Second World War, Ellen served as a junior minister.

In 1945 she became Minister of Education, succeeding in raising the school leaving age from 14 to 15.



We'll meet again, we do know where and we do know when...

Residents at Elizabeth Yarwood Court will soon be moving to the new development, Brunswick Village, just after Easter.

To mark the occasion, an Afternoon Tea and Song event was organised by scheme manager, Donna Shaw.

A beautiful selection of popular classics was sung by entertainer, Kim Carroll, all in aid of the Alzheimer's society.

Even the sun made an appearance so residents could enjoy their goodie boxes or sandwiches, savouries and cakes all made by Donna.

A truly fitting event to mark the end of an era.



Easter Bank Holiday 2021

Closed

Good Friday - 2nd April

Easter Monday - 5th April

For any emergency repairs during this time, please call **0300 555 0128** (24 hours).

For any ASB or Domestic Violence Emergencies, please call **999/101** in the first instance.

To report any issues on the demolition sites, new build homes construction sites, or unauthorised person(s) on a building site during the Easter period, please tel: **0300 555 0128** 24-hour line (select option 1).

High-rise blocks and maisonettes

Issues at high-rise or maisonettes - 24-hour emergency service.

Tel Bridgewater Security on **07921 215 361**.

Emergency repairs

Please continue to use the 24-hour contact number: Tel: **0300 555 0128** (select option 2).

Smell gas?

If you smell gas or think there may be a gas leak (anytime). Contact National Grid immediately on **0800 111 999**.



**DON'T FORGET! -
KEEP UP TO DATE WITH THE
LATEST INFORMATION BY
FOLLOWING US ON SOCIAL MEDIA**

DON'T FORGET!

**Hands
Face
Space**

[gov.uk/coronavirus](https://www.gov.uk/coronavirus)

Arabic	للحصول على هذه المعلومات بلغتك الرجاء الاتصال برقم الهاتف 0300 555 0128
Bangla	এই তথ্যটি আপনার ভাষায় পেতে চাইলে দয়া করে টেলিফোন করুন 0300 555 0128 এই নম্বরে।
Chinese	如欲索取這資訊以閣下語言編制的副本請致電 0300 555 0128
French	Pour recevoir ces informations dans votre langue prière d'appeler le 0300 555 0128
Somali	Si aad u hesho macluumaadkaani oo luqaddaada ku qoran fadlan wax 0300 555 0128
Turkish	Bu bilgiyi kendi dilinizde almak için lütfen 0300 555 0128 numarayı arayınız.
Urdu	یہ معلومات اپنی زبان میں حاصل کرنے کیلئے براہ مہربانی 0300 555 0128 پر فون کیجئے۔

S4B Housing Office (by appointment only)

15 Brunswick Street Manchester M13 9SU

T: 0300 555 0128 E: Info@s4bmanchester.co.uk

W: [s4bmanchester.co.uk](https://www.s4bmanchester.co.uk)

FOLLOW US ON

