



Gartside Gardens

Improvements Update – July 2015



Gartside Gardens is currently being transformed into a new park for the benefit of all residents. There will be new playgrounds for children under 8-years old and also older children, all with the following new features - entrance area, lighting in the park, paths, trees and plants. A multi-use games area has already been installed and is being used.

This Information pack provides the latest update on the ongoing improvement works in the park.

What are the final plans for Gartside Gardens?

A big investment is being made to improve the overall quality of Gartside Gardens, to provide a high quality park for local people. We apologise for any disruption you may experience, but the works are essential to make the improvements for all local residents, so please bear with us during this time.

A plan is included in this pack.

A new multi-use games area was built in the park in August 2014 and this continues to be really popular with local residents, along with other improvements.





New entrance for the Park

A new entrance on Kincardine Road is being created to welcome people into the park and provide a focal point, with a paved semi-circle and paths leading across the park.

What other 'open space' improvements will S4B be making?

As well as the new quality improvements to Gartside Gardens, the regeneration plans for Brunswick will also include new:

- green boulevard
- orchard
- 25 city allotments for the community
- play area in Gartside Gardens
- play area with high quality play equipment located off Glenbarry Close
- over 750 trees planted

S4B have used trees felled as part of the improvement works in the park for the new community space at Medlock Primary School, creating stepping stones and seats.

One of the trees felled from Hartfield Close will be carved into a sculpture by a chainsaw carver and local school children will choose the design.



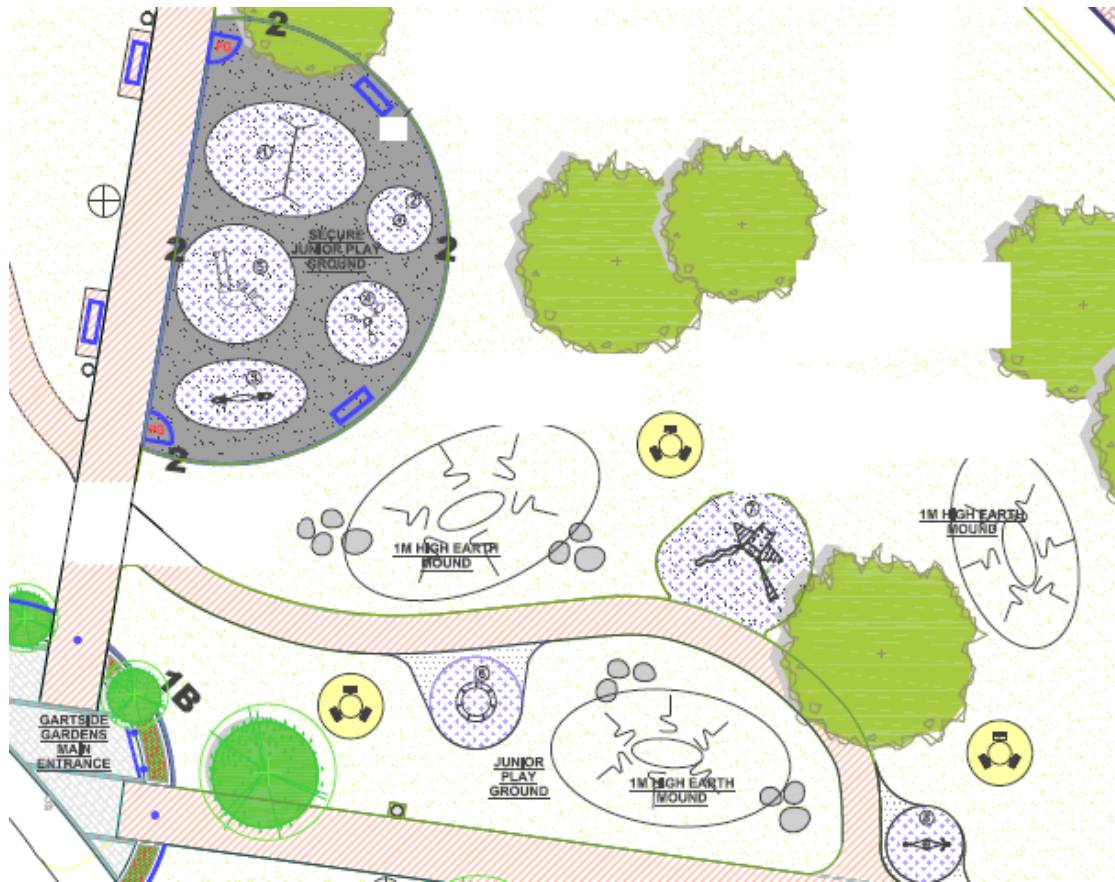
New lighting in the park.

Manchester City Council have asked S4B to deliver new mains lighting which will replace the solar lighting. The new lights will be installed when the rest of the works are carried out to the park.

A new play area in the park.

There will be a new play area within Gartside Gardens which will include swings, slide, climbing frame and springy hopper for children aged 2-8 years. For children over 8 years old there will be a roundabout, climbing frame, swing and play boulders and play mounds. There will also be a new play area at Glenbarry Close.





Will I be able to still use the park during the works?

Most of the grassed space in the park will be closed for the works, as drainage and landscape works needs to take place across the park. Although the multi-use games area will remain open throughout the works.

How long will it all take?

The work began in the park in February 2015. We are expecting the play areas in park to re-open for use in September 2015. Some of the grassed areas will remain closed and the development of the new houses will follow.

How can I get involved?

You can get involved with **Friends of Gartside Gardens and Green Spaces**, a local group of residents who plan and deliver the very successful Gartside Gardens fun day each year and plan projects to enhance the green space across Brunswick.

Contact foggggs@outlook.com

Please come along to Gartside Gardens Fun day on Saturday 15th August between 12:00 – 4:00pm.

This year, as the park is closed for improvements, the fun-day will in street festival style, taking place on Kincardine Road.



If you have question about the improvements, please call 0300 555 0128 or take a look at the plans on our website www.S4Bmanchester.co.uk

